

**ReadiLink™ Rapid mFluor™ Violet 450
Antibody Labeling Kit *Microscale
Optimized for Labeling 50 µg Antibody Per
Reaction***

Catalog number: 1100

Unit size: 2 Labelings

Component	Storage	Amount
Component A: mFluor™ Violet 450	Freeze (<-15 °C), Minimize light exposure	2 vials (One vial is for 50 µg protein)
Component B: Reaction Buffer	Refrigerate (2-4 °C), Minimize light exposure	1 vial (20 µL)
Component C: TQ™-Dyed Quench Buffer	Freeze (<-15 °C), Minimize light exposure	1 vial (20 µL)

OVERVIEW

AAT Bioquest's mFluor™ dyes are developed for flow cytometry-focused applications. These dyes have large Stokes Shifts, and can be well excited by the laser lines of flow cytometers (e.g., 405 nm, 488 nm and 633 nm). mFluor™ Violet 450 dyes have fluorescence excitation and emission maxima of ~405 nm and ~450 nm respectively. These spectral characteristics make them an excellent replacement for Pacific Blue™ labeling dye. mFluor™ Violet 450 SE is reasonably stable and shows good reactivity and selectivity with protein amino groups. This kit has all the essential components to perform five separate labeling reactions and purifications. Each of the two vials of mFluor™ Violet 450 SE provided in the kit is optimized for labeling ~50 µg antibody. mFluor™ Violet 450 SE antibody labeling kit provides a convenient method to label small amounts of monoclonal, polyclonal antibodies or other proteins (>10 kDa) with the Violet Laser-excitabile mFluor™ Violet 450 SE.

AT A GLANCE

Table 1. Available fluorophores in AAT Bioquest ReadyLink™ Rapid Antibody Labelling Kits

Cat#	Labels	Ex (nm)	Em (nm)
1100	mFluor™ Violet 450	403	454
1105	mFluor™ Violet 420	398	411
1110	mFluor™ Violet 510	414	508
1114	mFluor™ Violet 540	399	550
1120	mFluor™ Blue 570	553	570
1123	mFluor™ Green 620	522	617
1126	mFluor™ Yellow 630	561	630
1130	mFluor™ Red 700	657	700
1131	mFluor™ Red 780	629	780
1220	iFluor™ 350	345	442
1227	iFluor™ 555	559	569
1230	iFluor™ 594	592	614
1235	iFluor™ 647	654	674
1240	iFluor™ 680	682	701
1245	iFluor™ 700	693	713
1250	iFluor™ 750	753	779
1255	iFluor™ 488	491	514
1260	iFluor™ 633	638	655
1265	iFluor™ 790	782	811
1290	Cy3	555	565
1292	Cy5	644	665
1294	Cy7	749	776
1299	FITC	494	520

PREPARATION OF WORKING SOLUTION
Important

Warm all the components and centrifuge the vials briefly before opening, and immediately prepare the required solutions before starting your conjugation. The following protocol is for recommendation.

Protein working solution (Solution A):

For labeling 50 µg of protein (assuming the target protein concentration is 1 mg/mL), mix 5 µL (10% of the total reaction volume) of Reaction Buffer (Component B) with 50 µL of the target protein solution.

Note If you have a different protein concentration, adjust the protein volume accordingly to make ~50 µg of protein available for your labeling reaction.

Note For labeling 100 µg of protein (assuming the target protein concentration is 1 mg/mL), mix 10 µL (10% of the total reaction volume) of Reaction Buffer (Component B) with 100 µL of the target protein solution.

Note The protein should be dissolved in 1X phosphate buffered saline (PBS), pH 7.2 - 7.4; if the protein is dissolved in glycine buffer, it must be dialyzed against 1X PBS, pH 7.2 - 7.4, or use Amicon Ultra-0.5, Ultracel-10 Membrane, 10 kDa (cat# UFC501008 from Millipore) to remove free amines or ammonium salts (such as ammonium sulfate and ammonium acetate) that are widely used for protein precipitation.

Note Impure antibodies or antibodies stabilized with bovine serum albumin (BSA) or gelatin will not be labeled well.

Note For optimal labeling efficiency, a final protein concentration range of 1 - 2 mg/mL is recommended, with a significantly reduced conjugation efficiency at less than 1 mg/mL.

SAMPLE EXPERIMENTAL PROTOCOL
Run conjugation reaction

1. Add the protein working solution (Solution A) to ONE vial of labeling dye (Component A), and mix them well by repeatedly pipetting for a few times or vortex the vial for a few seconds.

Note If labeling 100 µg of protein, use both vials (Component A) of labeling dye by dividing the 100 µg of protein into 2 x 50 µg of protein and reacting each 50 µg of protein with one vial of labeling dye. Then combine both vials for the next step.

2. Keep the conjugation reaction mixture at room temperature for 30 - 60 minutes.

Note The conjugation reaction mixture can be rotated or shaken for longer time if desired.

Stop Conjugation reaction

1. Add 5 μL (for 50 μg protein) or 10 μL (for 100 μg protein) which is 10% of the total reaction volume of TQ-Dyed Quench Buffer (Component C) into the conjugation reaction mixture; mix well.
2. Incubate at room temperature for 10 minutes. The labeled protein (antibody) is now ready to use.

Storage of Protein Conjugate

The protein conjugate should be stored at > 0.5 mg/mL in the presence of a carrier protein (e.g., 0.1% bovine serum albumin). For longer storage, the protein conjugates could be lyophilized or divided into single-used aliquots and stored at $\leq -20^{\circ}\text{C}$.

EXAMPLE DATA ANALYSIS AND FIGURES

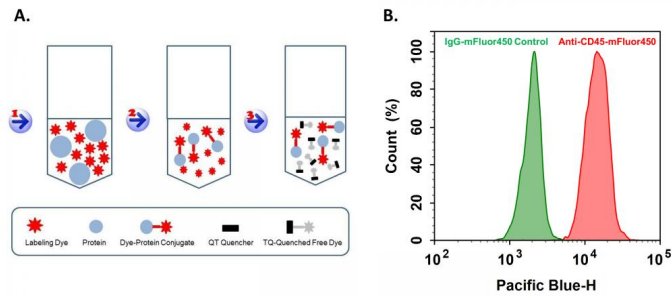


Figure 1.

Expression of CD45 in differentiated HL-60 cells were quantified using labeled anti-CD45 antibody by ReadiLink™ Rapid mFluor™ Violet 450 Antibody Labeling Kit (Cat# 1100). **A.** ReadiLink™ Kit Labeling Principle. **B.** HL-60 cells were with 1.25% DMSO for 4 days to differentiate. The live cells were incubated with 1 $\mu\text{g}/\text{ml}$ anti-CD45-mFluor450 or IgG-mFluor450 control and analyzed by NovoCyte.

DISCLAIMER

AAT Bioquest provides high-quality reagents and materials for research use only. For proper handling of potentially hazardous chemicals, please consult the Safety Data Sheet (SDS) provided for the product. Chemical analysis and/or reverse engineering of any kit or its components is strictly prohibited without written permission from AAT Bioquest. Please call 408-733-1055 or email info@aatbio.com if you have any questions.